

ARGO 1.0

**The software
that expands
with you**

ARGO is a software product designed by *LAE electronic* for the survey of remote plants monitored by our TAB software. Communication takes place through ordinary telephone line and up to 40 remote stations can be monitored.

MINIMUM SYSTEM REQUIREMENTS

- PENTIUM microprocessor based PC, 16MB RAM
- 20 MB free on HardDisk, CD ROM drive
- ISDN/PSTN modem and telephone line
- Windows 95/98 operating system
- pcAnywhere 8.02/9.0 Host and Remote for Windows

Description

The system based on the ARGO software allows tele-survey and tele-assistance of one or more stations, located anywhere, in which there is a PC with the LAE TAB software. These stations are plants such as supermarkets, cold storage rooms etc. controlled by one or more LAE regulators fitted with serial port.

The ARGO, through calls at set intervals, contacts every single Host station, downloads the alarm status from the plant and stores it in the RCOS (Remote Control Operating Station) PC.

After the ARGO has performed the polling on all stations, it draws up a report in which there's a short description of the situation of every plant or, if the call failed, a communication error appears. If the SMS task has been enabled, this report is transmitted to one or more mobile telephones.

At any moment, from the RCOS the operator can read the lately acquired data from the remote plant, or contact a Host station to check the situation in detail. In this latter case, by taking over the control of the remote plant, it will be possible to analyse graphs, change control values of the instruments or however operate from the RCOS as being in the Host station.



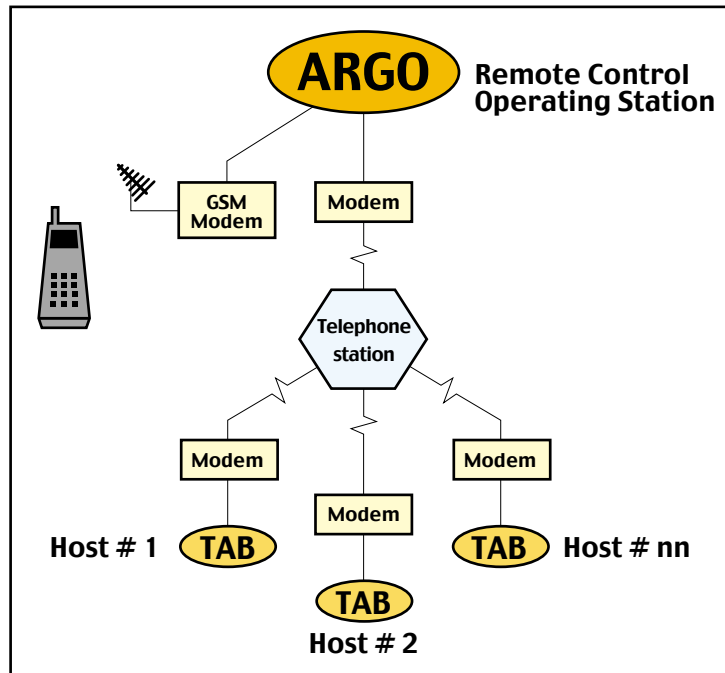


Figure 1

Putting together the system represented in figure 1 implies the usage in every station, both Host and RCOS, of **pcAnywhere**, a software allowing the transfer of data from TAB to ARGOS. The first step is therefore to install pcAnywhere in the Host stations and, only after having performed this in all the connected stations, proceed to completing the system with the installation and configuration of pcAnywhere and ARGOS in the RCOS.

Warning: before installing and configuring the pcAnywhere, it's necessary to carefully read the manuals enclosed to it. Moreover, when buying the modem to be connected to the PC's it's important to make sure that the modem chosen is compatible with the station telephone line (ISDN or PSTN) and also that the protocol of the modems is compatible with each other (Host-Remote).

Configuration of the HOST stations

1. Start by installing and/or checking on the correct operation of the modem, then install pcAnywhere. Copy the files from the ARGOS\HostData folder of the CD ROM into the Data folder of pcAnywhere.
2. Start pcAnywhere. From the *Host Connections* window configure "TAB Host" task by selecting the modem used for the connection with the RCOS, then set "launch with Windows" option and if necessary customise the password.
3. Re-start the computer and check that pcAnywhere and TAB are launched automatically.
4. For every station take note of the TAB path and of the modified password, if any.

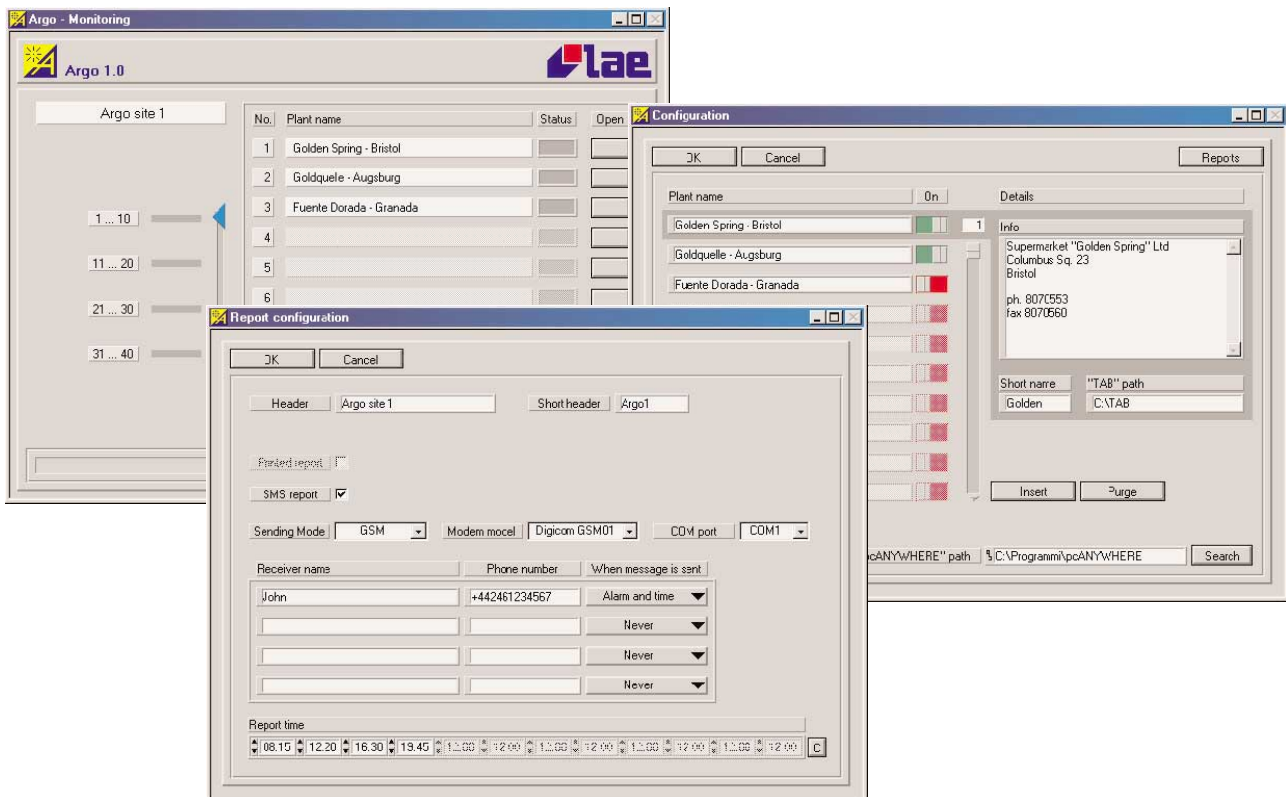
Remote Control Operating Station configuration

1. When the PC is off, connect the software protection key to a 'LPT' parallel port. In the event that a printer must also be connected to the same port, insert the key between the port and the printer connector. If the key is not fitted, the ARGOS will run as a demo, that is it will not call the Host stations.
2. Install and/or check on the correct operation of the modem, then install pcAnywhere.
3. Insert the ARGOS CD into the CD ROM drive and run: \ARGOS\English\disks\setup.exe. When the operation is over, re-start the PC.
4. Now, launch ARGOS from START menu. In the main *Argo - Monitoring* window, click on Configuration. Input the password **SM1436** to enable the configuration function. From this window, you can move on to the configuration of every single Host connection, for which you must input: identification text (plant name); additional information (info); short name to be used in the SMS transmissions and the folder name where the Host PC TAB is installed. With the switch located at the side of each plant, it's possible to enable or exclude that station from tele-survey functions indefinitely. If you need to remove a unit once for all, it's necessary to erase all the text in the "Plant name" field, then

click on **Purge**. Whenever you must insert a new unit not at the array end but between two already programmed rows, move the insertion point at the top row, then click on **Insert**.

In "Updating rate" set the interval between calls to refresh the situation. You must program the frequency of the calls considering both the importance of the updating and the time needed to perform the polling of all Hosts.

Finally set the path for the pcAnywhere folder.



5. By clicking on **Reports** you have got access to the *Report configuration* window. From here it's possible to configure how, to whom and when ARGO will send SMS reports. The messages can be sent through wired telephone lines by means of the same Host connection modem or, by using a GSM modem, directly to a mobile telephone network. This latter option is preferable, as it ensures better reliability and independence from the access protocol to the services offered by telephone Companies.

In "Header" insert the name of the RCOS which appears in the main window, in "Short Header" input the identification of the calling plant which will appear as header in the SMS messages.

To enable the calls, tick the "SMS report" box and then select sending mode, ISDN/PSTN or GSM. In this latter case, choose the used GSM modem and the connecting port. It's now possible to set up to 4 receivers and the circumstances under which the report will be sent. Set in "Report Time" up to twelve times for sending reports, and if necessary use **C** to erase the last time set. With **OK** confirm the data set and return to the *Configuration* window, then **OK** again to terminate the configuration operations. Then exit from ARGO with **Exit**.

6. At the first and at any following modification of the tele-survey system configuration, it's indispensable to set the necessary data in pcAnywhere to establish the contact with the Hosts.

Therefore start pcAnywhere. From the remote control window, for every Host plant there will be an icon with its name given in the ARGO. For each Host, only insert: type of modem, telephone number and, if modified, the password (default password is ARGO).

Important: it's now indispensable to check if the data set are correct by making a test connection with every destination. To achieve this, it's only necessary to double click on the icons of the Hosts.

7. If a wired telephone line is used for the SMS task, it's necessary to perform the following operations: program data regarding SMS calls from the on-line service window. Select the "Argo SMS" icon and set

modem, number of Telephone Station and the relevant script to be executed.

Also in this case it's important to check that the configuration data are correct by making a test connection. Double click on the "Argo SMS" icon, once that the connection with Telephone Station has taken place, fill in the proposed mask manually and make sure that the message is actually sent.

8. If all the above described operations have been performed with positive results, it's now possible to launch ARGO to get tele-survey service started.

Transmission of SMS messages

Messages can either be sent in case of an alarm or even at programmed times. In the *Report configuration* window you can choose if and when alarms are sent according to the following options: **Never**, temporarily excluded; **Alarm**, only when alarms occur; **Alarm and Time**, therefore when alarms occur or however at the times set into the "Report Time" boxes. The alarm condition must consist of one or more new alarms, with priority greater than or equal to 2, detected in one or more plants. In the event that the message is sent at a set time, it will report that there are alarms, even not new ones and with priority lower than or equal to 1, in one or more plants or, if no alarm is on, it will indicate that no alarm is going on. In this latter case, the enabled receiver will however be called to inform him about the correct operation of the whole system. Differently, if the set call is not received, this will mean that a failure in any of the vital parts of the system occurred (PC, modem, telephone line etc.). In the event that ARGO doesn't succeed to get in contact with a Host station, an alarm with priority 1 will be generated.

The format of the message reports the following information:

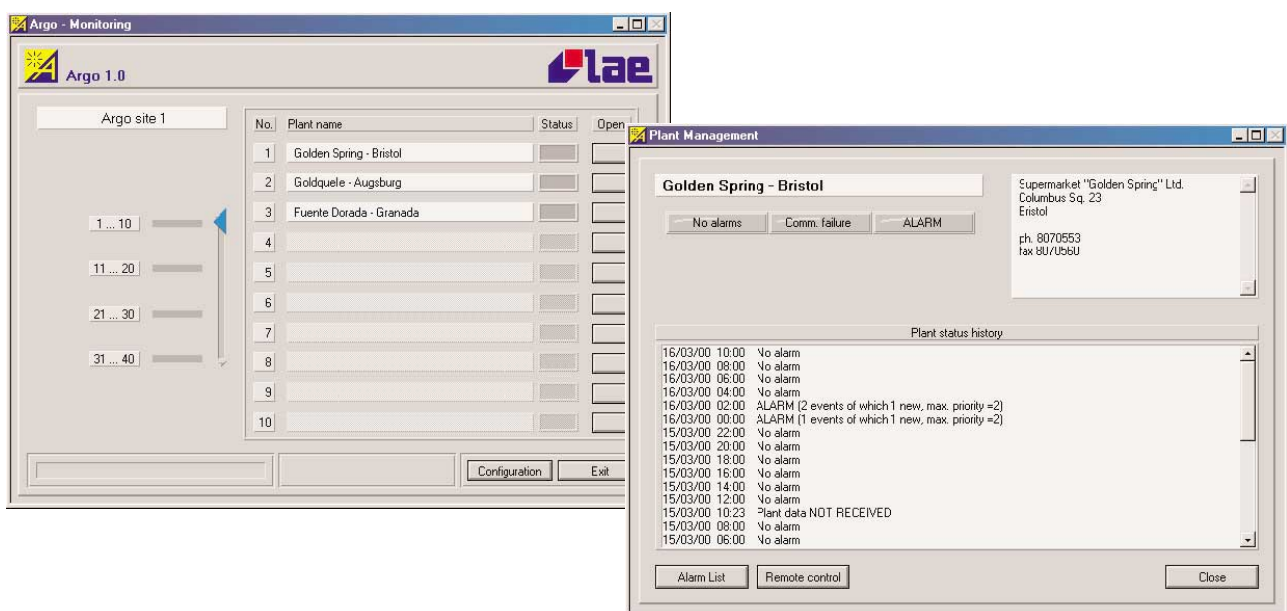
"Short Header", "Date and Time", ">..." (list of the plants where new alarms took place or if none "No Alarms").

The use of the GSM modem allows to send an alarm report not only automatically but also as a reply to an occasional request by any GSM mobile phone. To achieve this it's necessary to send a message like the following to the modem telephone number: >'receiver's number' ':required function'. As an example: **>+394561234567: LCR**.

Presently the only supported function is LCR (Last Calls Report).

Monitoring of the plants status

From the *ARGO Monitoring* window it's possible to get indications about the status of the Hosts and to connect with them manually. In this window the connected plants are displayed in ten unit groups and, for each of them, the description and status are displayed: Green, no alarm; Yellow, connection fault, Red, one or more



alarms in the plant, Grey, plant excluded from monitoring. In addition, for every non displayed group there is a summary of the group status, in this summary the most important indication has got priority according to the following sequence: Red, Yellow, Green and Grey.

Use the cursor to move from one group to another.

For every Host there is a button to have access to a series of functions relevant to that plant. Pressing that button opens the *Plant Management* window from which it's possible to view the stored notes of the last 500 communication reports.

Clicking on Alarm List a detailed list of the last alarms report sent from the TAB is displayed.

Clicking on Remote Control it's possible to take control of the Host station and perform all operations of verification and programming as if being on site.

To exit from the ARGO program it's necessary to input the password **SM1436**.

