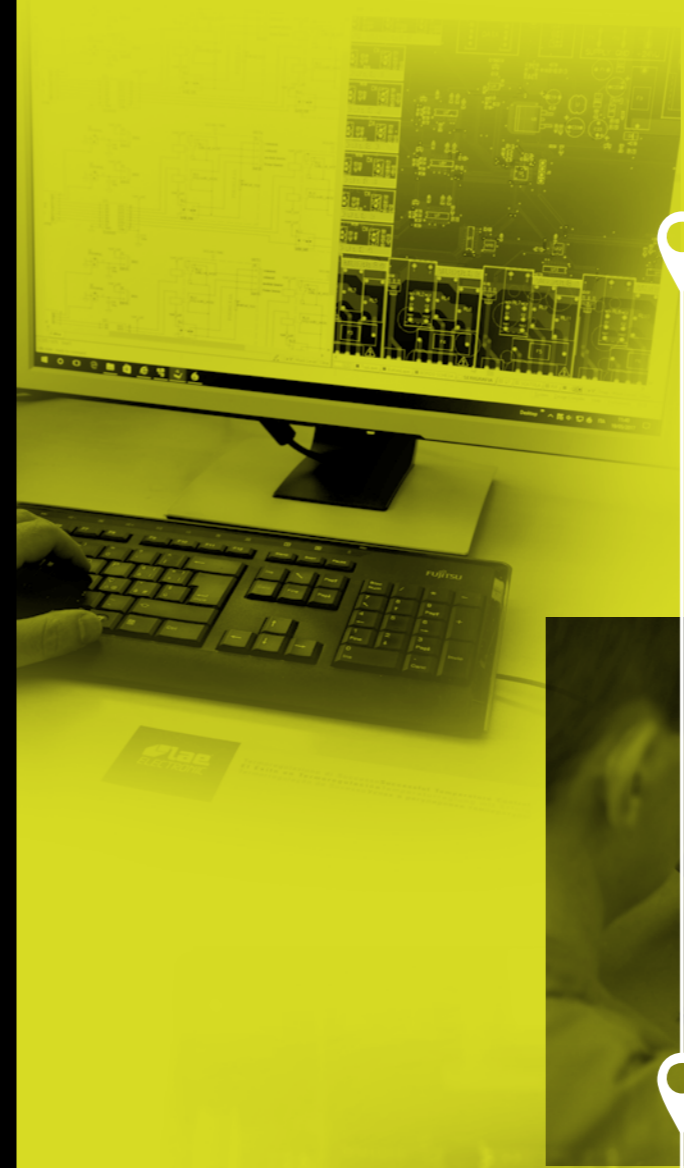


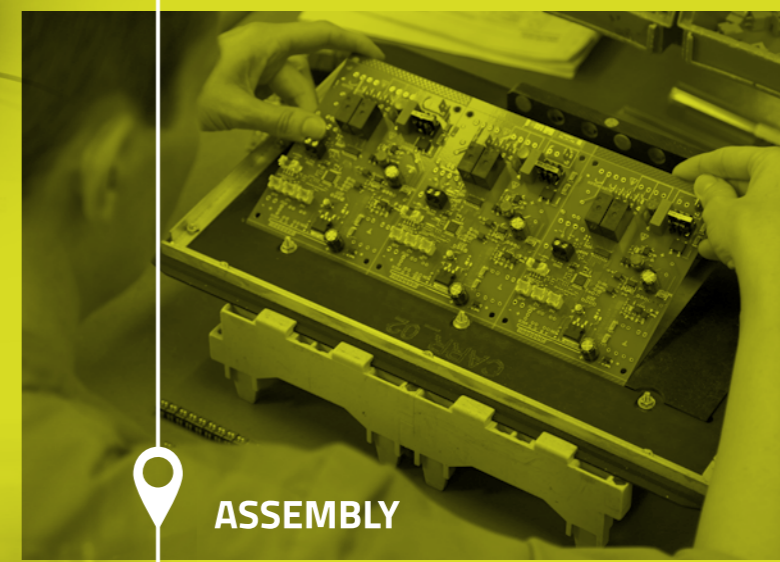
LOTS OF
OPTIONS,
JUST ONE
CHOICE.

CATALOGUE

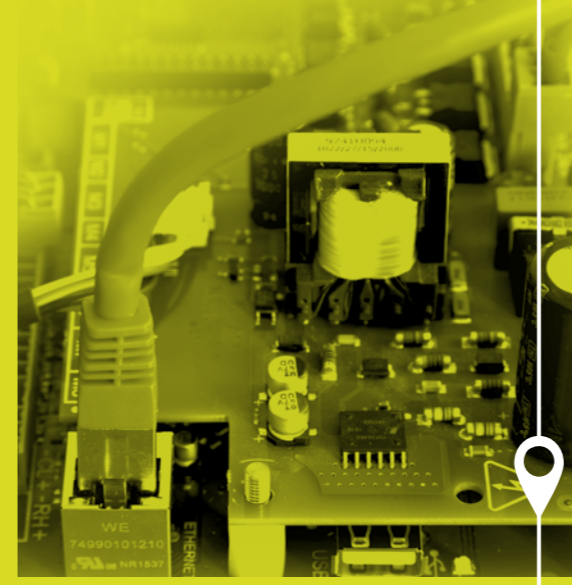
A successful method



PRODUCT
DESIGNING



ASSEMBLY



EOL TEST



WORLDWIDE
SALES



Suitable for use R290



Wireless connection



Bluetooth



Internet of Things

GLOBAL MARKET PRESENCE

Today millions of professional and commercial refrigerators, blast chillers and freezers, dough-retarder provers, ovens, air conditioners, compressed air dryers are controlled by high-performance regulators. You may often wonder who manufactures these customized electronic controls.

If you see a product operating with innovative technology & long lasting performance it is likely to be our LAE ELECTRONIC brand.

LEADER IN CUSTOMIZED CONTROLLERS

For many years we have proven to be leaders in the designing of customized controllers based on the technical specifications and design of the system to be controlled. For over thirty years, we have supported innovative changes requested by some of the most reputable world manufacturers.

Our Customers recognize the competency and the unique know-how with which we approach the project phases, creating synergies for the development of original and unique proposals. Solutions we help provide are the key to the complete success of their system.

PERFECT INTEGRATION

We aim to produce a perfect integration into your applications, without compromise, making LAE Electronic controllers among the best ever in the global marketplace. Our products have a solid reputation for reliability and incredible efficiency in the toughest working conditions. Being aesthetically sophisticated and easy to operate, they are just as user-friendly as a tablet or a smartphone.

ENVIRONMENT & ETHICAL CODE

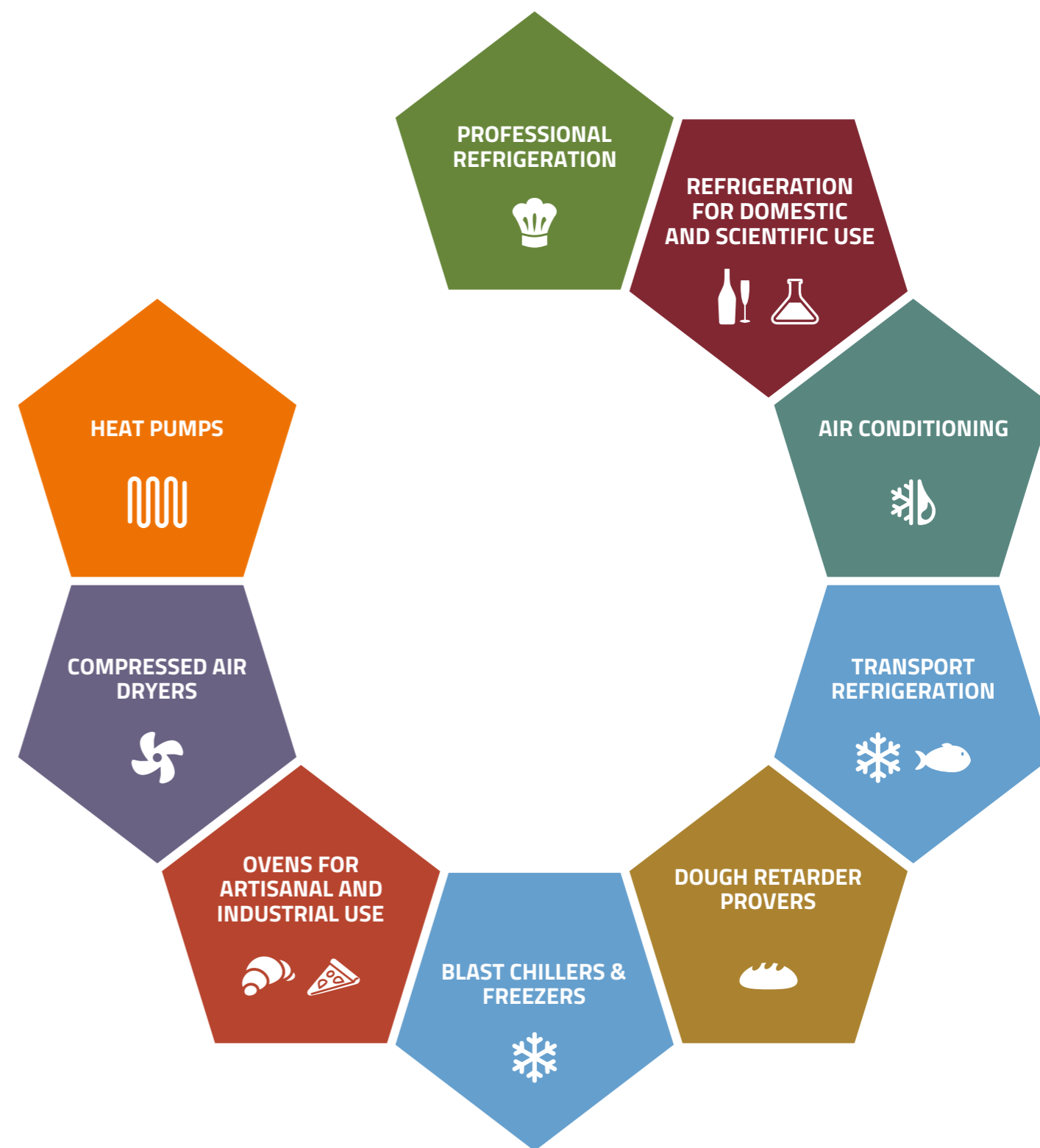
LAE policy is to always respect all environmental protection concerns that are important to all consumers. We develop functions and adopt technologies that best meet the growing needs for energy saving and low environmental impact.

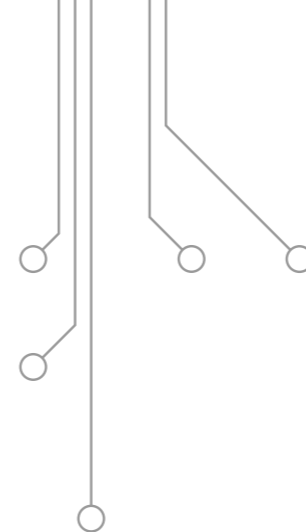
Another cornerstone of our company policy is focused on ethical treatment of all workers. We closely work with exclusively selected suppliers that have adopted ethical codes.

CONNECTIVITY

Our R&D division is continuously engaged in the assessment of the latest generation of new technologies, especially with respect to the collection and processing of data. These connectivity features are now easily obtainable providing great functionality for the end-user and the manager. Machines that communicate and coordinate among them, by means of our controllers, form a much more efficient and easily controllable system, with enormous benefits in terms of safety, process stability and product quality.

Applications





Leader in the designing of high-profile solutions

For over ten years LAE Electronic has been investing in technologies and human resources for the designing of high-profile customised controllers and Human-Machine Interfaces, in order to obtain the best results in terms of aesthetics, performances, versatility and intuitive use.

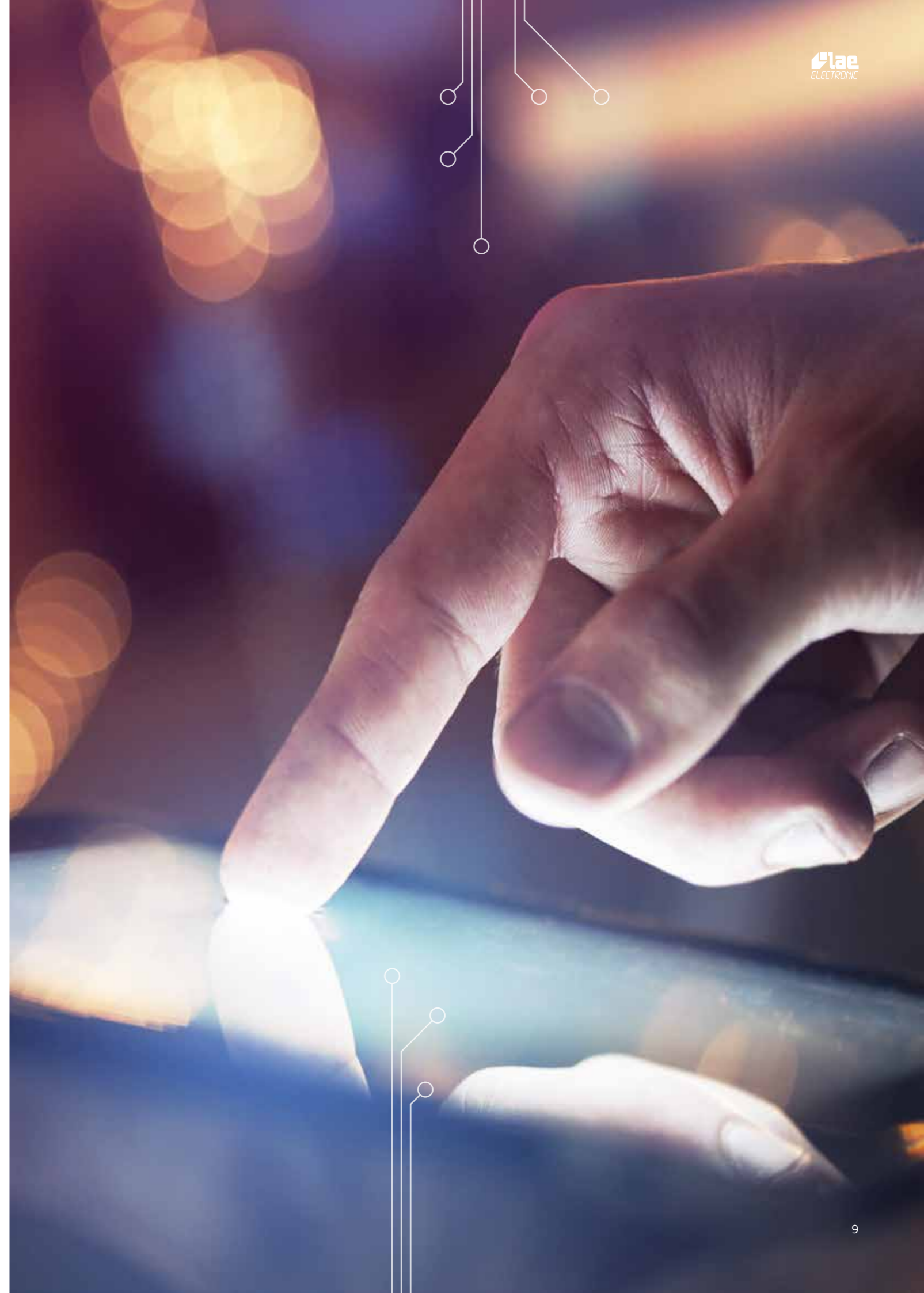
The major world players recognise the competency and the unique know-how with which we approach the project phases. This has become our core-business, allowing an expansion in turnovers and means.



Touch screen displays

We offer high-performance TFT touch screen displays with various formats, from 4.3" up to 10", both capacitive and resistive.

The variety of graphic options is unlimited, in order to offer the most suitable configuration to those who daily need to work with an intuitive and effective interface, featuring no complications.

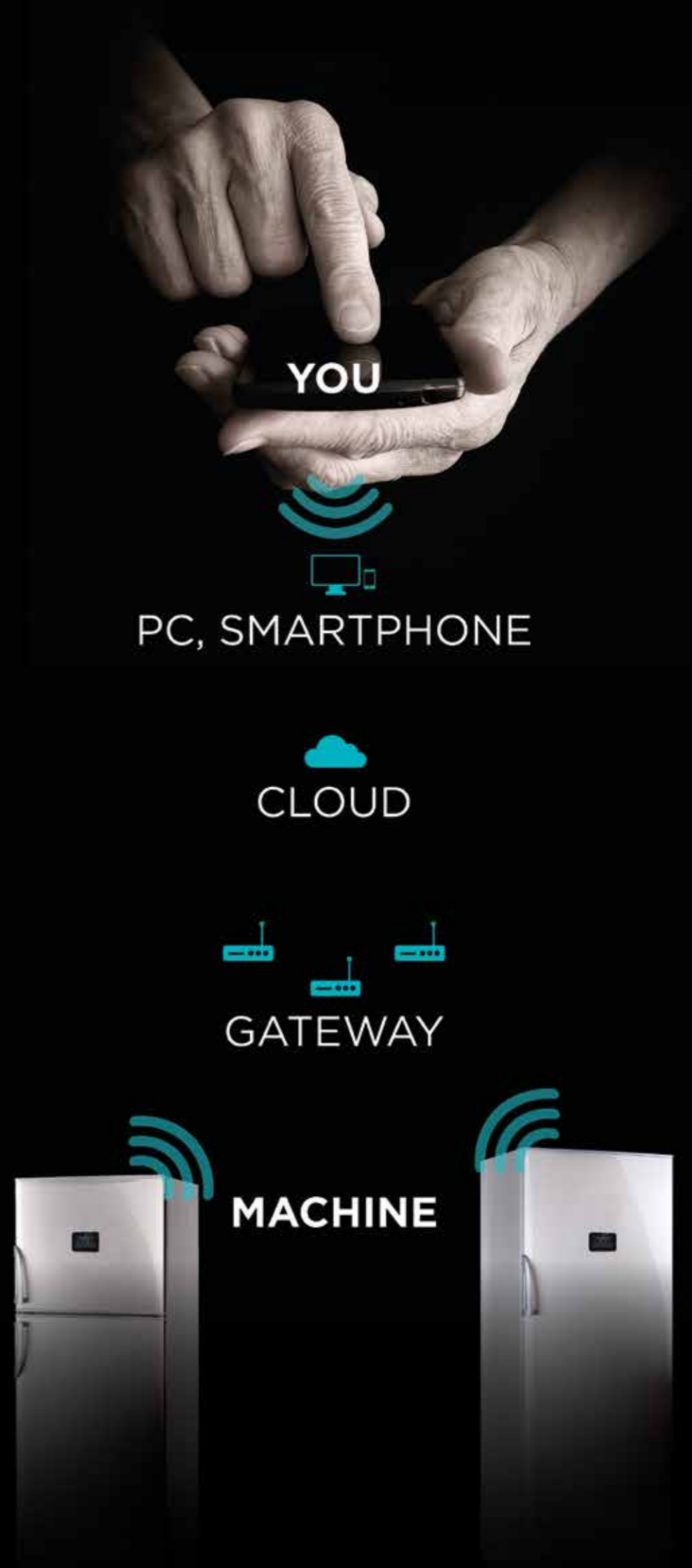


Connectivity

An important benchmark in the industry: a totally data safe, affordable, customizable clouding service.

Benefits are real and opportunities limitless, just to mention a few: predictive maintenance providing greater productivity and ensuring long lasting operation of the machine; comfortable servicing monitoring and scheduling; HACCP logs. All data available at any time, anywhere on your Smartphone, PC or tablet. All this ensures lower operation costs.

Not only the more sophisticated controllers but also basic LAE controllers may be connected to the cloud by means of powerful gateways.



Standard products

CONTROLLERS	Pg. 13
REFRIGERATION CONTROLLERS	Pg. 17
COMPRESSOR CONTROLLER	Pg. 32
TIMER	Pg. 33
SUPERVISORY SYSTEMS	Pg. 34
PROBES - TRANSMITTERS	Pg. 37

CONTROLLERS

AC1-2W

110 x 53 x 75 mm

Two channel universal Controller, ON/OFF or PID



AC1-2W series

Functions	AC1-2WT...	AC1-2WA...
Input type	PTC	NTC10K*
Range	-50÷150°C -60÷300°F	-40÷125°C -40÷260°F
Accuracy	±0.3°C	±3mV
Resolution	0.1 / 1°C / 1°F	0.1 / 1
Ambient temperature	-10÷50°C	

^[a] -50÷150°C; ^[b] remaining range.

* The standard NTC10K is the SN4B20P1

	AC1-2W	T	Q	2	R	E	-B
		(1)	(2)	(3)	(4)	(5)	(6)
Pos.	Function	Description					
(1)	Input	A = 0÷1V; T = PTC / NTC10K					
(2)	Connections	Q = Detachable screw terminals					
(3)	Output No.	1 = one; 2 = two					
(4)	Output type	R = relay					
(5)	Supply	E = 230Vac 50/60Hz 50/60Hz 3 W					
(6)	Serial comm.	Nil = no; -A = TTL; -B = RS485					

How to order:

- AC1-2WTQ2RE-B (PTC/NTC10K input, detachable screw terminals, 2 relays, 230Vac supply voltage, RS485 port)
- AC1-2WAQ2RE-A (0÷1V input, detachable screw terminals, 2 relays, 230Vac/dc supply voltage, TTL port)

➤ In order to know versions available, please consult LAE or our local dealer.

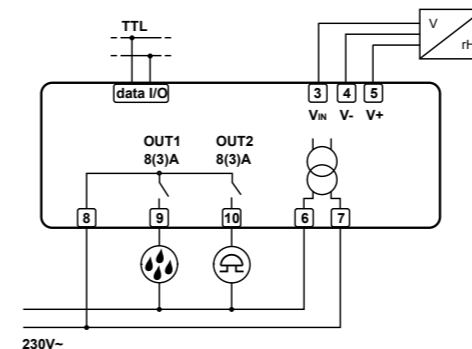
Main Features

- Wall-mount controller
- Runs on mains power supply
- PID with autotuning or ON/OFF control
- Input for 0÷1V, PTC/NTC10K
- 0.1 / 1°C or 1°F resolution
- Selectable Refrigerating/Heating [Dehumidifying/Humidifying] control
- Absolute or relative temperature alarms
- ON/OFF button on front
- Connectivity to LAE TAB supervisory systems

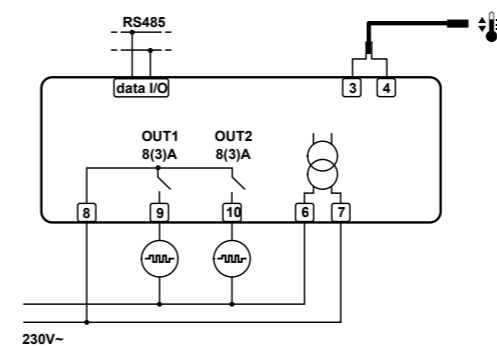
Applications

Temperature: control of small cold stores, heating systems, bains-marie, ovens, laboratory equipment.

Humidity: control of greenhouses, seasoning cells, cold rooms, air-conditioned rooms.



AC1-2WAQ2RE-A



AC1-2WTQ2RE-B

AC1-5

77 x 35 x 77 mm

Two channel universal Controller, ON/OFF or PID

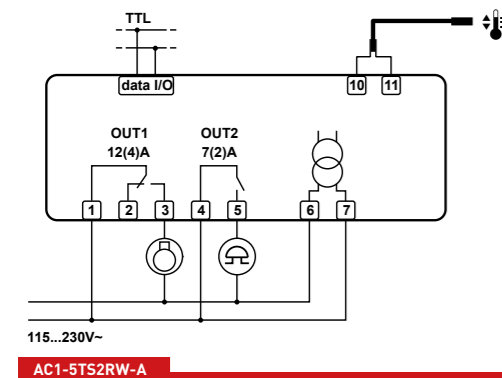


Main features

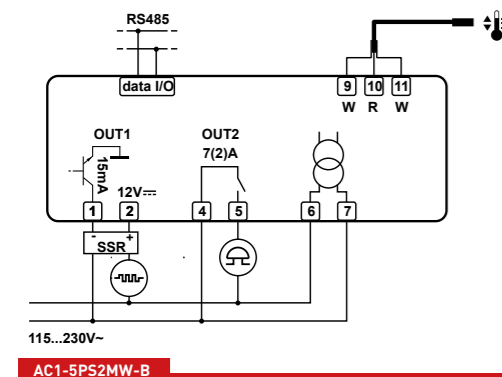
- Runs on universal mains power supply
- PID with autotuning or ON/OFF control
- Main output on 12A relay or for SSR-piloting and auxiliary output on 5A relay
- Input for 0÷1V, 0/4÷20mA, PTC/NTC10K, TC J/K or Pt100
- 0.1 / 1°C or 1°F resolution
- Selectable Refrigerating/Heating (Dehumidifying/Humidifying) control
- Absolute or relative temperature alarms
- ON/OFF button on front
- Connectivity to LAE TAB supervisory systems

Applications

Temperature: Control of small cold stores, refrigerated cabinets and tables, heating systems, heated cupboards, bains-marie, ovens, laboratory equipment.
Humidity: Control of greenhouses, seasoning cells, cold rooms, air-conditioned rooms.



AC1-5TS2RW-A



AC1-5PS2MW-B

AC1-27

71 x 97 x 61 mm DIN rail

Two channel universal Controller, ON/OFF or PID

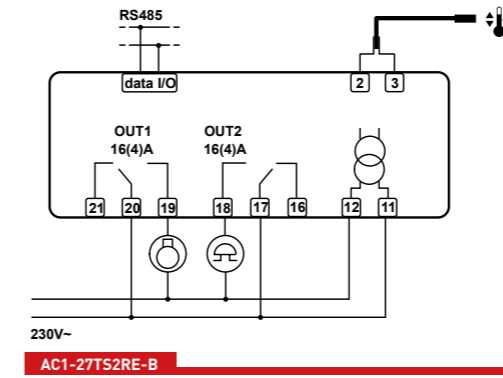


Main features

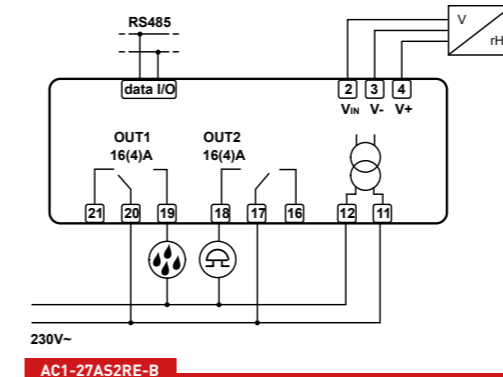
- Runs on mains power supply
- PID with autotuning or ON/OFF control
- Main output on 12A relay or for SSR-piloting and auxiliary output on 5A relay
- Input for 0÷1V, PTC/NTC10K, TC J/K or Pt100
- 0.1 / 1°C or 1°F resolution
- Selectable Refrigerating/Heating (Dehumidifying/Humidifying) control
- Absolute or relative temperature alarms
- ON/OFF button on front
- Connectivity to LAE TAB supervisory systems

Applications

Temperature: on control panels for small cold stores, heating systems, heated cupboards, bains-marie, ovens, laboratory equipment.
Humidity: on control panels for greenhouses, seasoning cells, cold rooms, air-conditioned rooms.



AC1-27TS2RE-B



AC1-27AS2RE-B

Series AC1-5						
Functions	AC1-5T...		AC1-5P...	AC1-5J...		AC1-5I...
Input type	PTC	NTC10K*	Pt100	TC "J"	TC "K"	0+1V
Range	-50 +150°C	-40 +125°C	-100 +850°C	-50 +750°C	-50 +999°C	Configurable in setup
Accuracy	±0.3°C	±0.3°C	±0.3°C ^(a) ; ±1°C ^(b)	±3°C	±3mV	±0.2mA
Resolution	0.1 / 1°C / 1°F		1°C / 1°F		0.1 / 1	
Panel cut-out	71 x 29 mm (W x H)					
Ambient temperature	-10÷50°C					

^(a) -50÷150°C; ^(b) remaining range
 * The standard NTC10K is the SN4B20P1

How to order:

- AC1-5TS2RW-A (PTC/NTC10K input, screw terminals, 2 relays, 115÷230Vac supply voltage, TTL port)
- AC1-5JS2MW-B (J/K TC input, screw terminals, output 1 on SSR drive, output 2 on relay, 115÷230Vac supply voltage, RS485 port)

➤ On request, the AC1-5 is also available with gasket for a better protection between bezel and panel.

➤ In order to know versions available, please consult LAE or our local dealer.

AC1-5						
	T	S	2	R	W	-B
	(1)	(2)	(3)	(4)	(5)	(6)
Pos.	Function					
(1)	Input					
(2)	Connections					
(3)	Output No.					
(4)	Output type					
(5)	Supply					
(6)	Serial comm					

* = in the version with 12Vac/dc power supply, the maximum voltage on the outputs is 50Vac/dc, in order to ensure safety insulations.

AC1-27 series						
Functions	AC1-27T...		AC1-27P...	AC1-27J...		AC1-27A...
Input type	PTC	NTC10K*	Pt100	TC "J"	TC "K"	0+1V
Range	-50÷150°C -60÷300°F	-40÷125°C -40÷260°F	-100÷850°C -150÷999°F	-50÷750°C -60÷999°F	-50÷999°C -60÷999°F	Configurable in setup
Accuracy	±0.3°C	±0.3°C	±0.3°C ^(a) ; ±1°C ^(b)	±3°C		±3mV
Resolution	0.1 / 1°C / 1°F			1 °C / °F		0.1 / 1
Ambient temperature	-10÷50°C					

^(a) -50÷150°C; ^(b) remaining range.
 * The standard NTC10K is the SN4B20P1

AC1-27						
	T	S	2	R	E	-B
	(1)	(2)	(3)	(4)	(5)	(6)
Pos.	Function					
(1)	Input					
(2)	Connections					
(3)	Output No.					
(4)	Output type					
(5)	Supply					
(6)	Serial comm.					

How to order:

- AC1-27JS2RE-B (TC J/K input, screw terminals, 2 relay outputs, 230Vac supply voltage, RS485 port).
- AC1-27AS2E-B (0÷1V input, screw terminals, 2 relay outputs, 230Vac supply voltage, RS485 port)

➤ In order to know versions available, please consult LAE or our local dealer.

LTR-5

77 x 35 x 77 mm

Single output ON/OFF or PID controller



Series LTR-5

Functions	LTR-5T..	LTR-5C..	LTR-5A...
Input type	PTC	NTC10K	0÷1V
Range	-50÷150°C -60÷300°F	-40÷125°C -40÷260°F	0÷99.9% r.H.
Accuracy	±0.3°C ^[a] ; ±1.0°C ^[c]	±0.3°C ^[b] ; ±1.0°C ^[c]	±0.7% r.H.
Resolution	0.1 / 1°C, °F		0.1 / 1 % r.H.
Front protection	IP55		
Panel cut-out	71 x 29 mm (W x H)		
Ambient temperature	-10÷50°C		

^[a]-50÷140°C; ^[b]-40÷110°C; ^[c]remaining range.

Main features

- Runs on mains power supply
- PID with autotuning or ON/OFF control
- Output on relay (16A) or SSR piloting
- Input for PTC, NTC10K or 0÷1V
- 0.1 / 1°C or 1°F resolution
- Refrigerating (dehumidifying) or heating (humidifying) control mode selection
- ON/OFF button on front
- Connectivity LAE supervisory systems

Applications

Temperature: Control of small cold stores, refrigerated cabinets and tables, heating systems, heated cupboards, bains-marie, ovens, laboratory equipment.

Humidity: Control of greenhouses, seasoning cells, cold rooms, air-conditioned rooms.

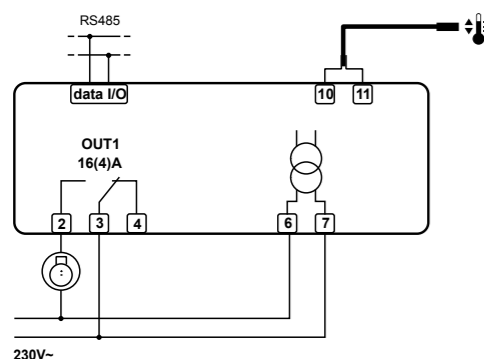
LTR-5	C	S	R	E	-B
	(1)	(2)	(3)	(4)	(5)
Pos.	Function	Description			
(1)	Input	T = PTC; C** = NTC10K; A = 0÷1V			
(2)	Connectors	S = screw terminals			
(4)	Output type	R = relay; F = SSR drive			
(5)	Supply	D = 12Vac/dc; E = 230Vac, U = 115Vac, 2 W			
(6)	Serial comm.	- = no serial port; -A = TTL; -B = RS485			

** The standard NTC probe is the SN4B20P1

How to order examples:

- LTR-5CSFE-B (NTC10K input, 1 SSR drive output, screw terminals, 230Vac supply, RS485 port)
- LTR-5ASRE (0÷1V input, 1 relay, screw terminals, 230Vac supply, no serial port)

- On request, the LTR-5 is also available with gasket for a better protection between bezel and panel.
- In order to know more options available for the models, please consult LAE or our local dealer.



LTR-5CSRE-B

AD2-5

77 x 35 x 90 mm

Universal Refrigeration Controller



AD2-5 series

Functions		B03W-BG	C14W-AG	C34W-BG
Temperature inputs	Thermostat	•	•	•
	Evaporator	•	•	•
	Auxiliary		•	•
Door switch input	Voltage free contact	•	•	•
	Voltage free contact		•	
Digital inputs	12, 24Vac voltage			
	Defrost synchronisation			•
	Thermostat	•	•	•
Outputs	Evaporator fans	•	•	•
	Defrost	•	•	•
	Auxiliary		•	•
Power supply	115-230Vac	•	•	•
	12Vac/dc			
Serial port	TTL serial port		•	
	RS-485 serial port	•		•
Keypad	Generic	•	•	•
	With light button			

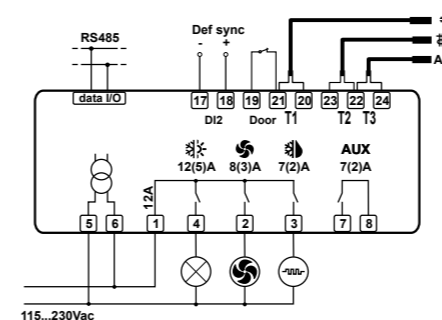
Main features

- Defrosts at regular intervals
- Optional synchronized defrost start and termination with master-slave connection
- Selectable NTC10K or PTC input
- Universal 115-230Vac power supply
- FLEXICOLD function for energy saving or alternative setpoint
- Optional control of a second compressor or evaporator
- Excellent evaporator fan control
- Temperature, door open, condenser high temperature/pressure alarms
- Light and standby control (On/Off)
- Connectivity to LAE supervisory systems

Applications

Plug-in cabinets, supermarket display cases, cold stores, control panels, upright fridges and freezers, refrigerated tables.

- All models come with an alarm buzzer.
- All models are fitted with detachable screw terminals.
- On request, the AD2-5 is also available with gasket for a better protection between bezel and metal panel.
- In order to know more options available for the models, please consult LAE or our local dealer.



AD2-5C34W-BG

Technical Data

Control Range	-50÷120°C, -55÷240°F
Resolution	0.1 / 1 °C; °F
Accuracy	NTC10K: <±0.3°C (-40.0÷70.0°C) PTC1000: <±0.5°C (-50÷120°C)
Sensor type	Selectable NTC10K standard mod. SN4B20P1/P2/P3 or PTC1000
Power supply	115÷230V~ ±10% 50÷60Hz 3W
Front protection	IP55
Panel cut-out	71 x 29 mm (W x H)
Ambient temperature	-10÷50°C

AD2-28

107 x 95 x 47 mm

Versatile Split Refrigeration Controller



Main features

- Cyclic defrosts
- Synchronized defrost start and termination with master-slave connection
- Selectable NTC10K or PTC input
- FLEXICOLD function for energy saving or alternative setpoint
- Optional control of a second compressor or evaporator
- Excellent evaporator fan control
- Absolute or relative temperature alarms, door open alarm, condenser high temperature/pressure alarm
- Light and standby control (On/Off)
- Connection to LAE supervisory systems
- Available display unit: LCD-5S or RU33

Applications

Upright refrigerators, plug-in and supermarket display cases, cold stores, control panels.

AD2-28 series

Functions		B1T5E-A	C1S4E-A	C1S5E-B
Temperature inputs	Thermostat	•	•	•
	Evaporator	•	•	•
	Auxiliary		•	•
Door switch	Voltage free	•	•	•
	Voltage free	•	•	•
Digital input aux.DI2	12÷24Vac			
	Defrost synchronisation			
	Quick on M/F			
Connections	On screw terminals	•	•	•
	LCD-5S		•	•
Displays	RU33	•		
	Thermostat	•	•	•
Outputs	Evaporator fans	•	•	•
	Defrost	•	•	•
	Auxiliary 1	•	•	•
	Auxiliary 2	•	•	•
	230Vac	•	•	•
Power supply	TTL	•	•	
	RS-485			•

› All models come with an alarm buzzer.

› In order to know more options available for the models, please consult LAE or our local dealer.

Technical data LCD-5S display unit

Dimensions	77 x 35 x 20 mm (WxHxD)
Panel cut-out	71 x 29 mm (WxH)
Front protection	IP55
Ambient temperature	-10÷50°C



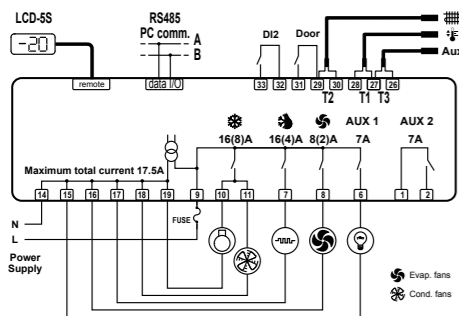
Technical data RU33 display unit

Dimensions	169 x 38 x 25 mm (WxHxD)
Panel cut-out	163 x 31.5 mm (WxH)
Front protection	IP55
Ambient temperature	-10÷50°C



Technical data

Range	-50...120°C, -55...240°F
Resolution	0.1 / 1 °C; °F
Precision	NTC10K: <±0.3°C (-40.0÷70.0°C) PTC1000: <±0.5°C (-50÷120°C)
Sensor type	Selectable NTC10K standard mod. SN4B20P1/P2/P3 or PTC1000
Power supply	230V~ ±10% 50÷60Hz 3W
Ambient temperature	-10÷50°C



AR2-28

107 x 95 x 47 mm

Versatile Split Refrigeration Controller with RTC



Main features

- Up to six real time defrosts
- Synchronized defrost start and termination with master-slave connection
- Selectable NTC10K or PTC input
- FLEXICOLD function for energy saving or alternative setpoint
- Optional control of a second compressor or evaporator
- Excellent evaporator fan control
- Absolute or relative temperature alarms, door open alarm, condenser high temperature/pressure alarm
- Light and standby control (On/Off)
- Connection to LAE supervisory systems
- Available display unit: LCD-5S or RU33

Applications

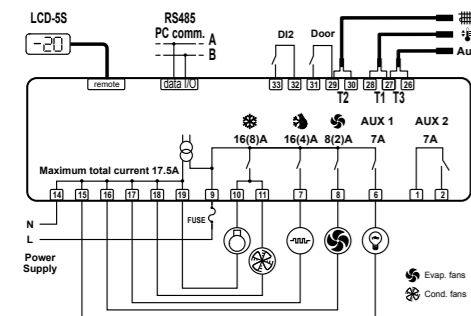
Plug-in cabinets, supermarket display cases, cold stores, control panels, upright fridges and freezers, refrigerated tables and all those applications where real time defrost is required.

AR2-28 series

Functions		B1T5E-A	C1S4E-A	C1S5E-B
Temperature inputs	Thermostat	•	•	•
	Evaporator	•	•	•
	Auxiliary		•	•
Door switch	Voltage free	•	•	•
	Voltage free	•	•	•
Digital input aux.DI2	12÷24Vac			
	Defrost synchronisation			
	Quick on M/F			
Connections	On screw terminals	•	•	•
	LCD-5S		•	•
Displays	RU33	•		
	Thermostat	•	•	•
Outputs	Evaporator fans	•	•	•
	Defrost	•	•	•
	Auxiliary 1	•	•	•
	Auxiliary 2	•	•	•
	230Vac	•	•	•
Power supply	TTL	•	•	
	RS-485			•

› All models come with an alarm buzzer.

› In order to know more options available for the models, please consult LAE or our local dealer.



AR2-28C1S5E-B



Technical data LCD-5S display unit

Dimensions	77 x 35 x 20 mm (WxHxD)
Panel cut-out	71 x 29 mm (WxH)
Front protection	IP55
Ambient temperature	-10÷50°C



Technical data RU33 display unit

Dimensions	169 x 38 x 25 mm (WxHxD)
Panel cut-out	163 x 31.5 mm (WxH)
Front protection	IP55
Ambient temperature	-10÷50°C

Technical data

Range	-50...120°C, -55...240°F
Resolution	0.1 / 1 °C; °F
Precision	NTC10K: $\pm 0.3^{\circ}\text{C}$ (-40.0÷70.0°C) PTC1000: $\pm 0.5^{\circ}\text{C}$ (-50÷120°C)
Sensor type	Selectable NTC10K standard mod. SN4B20P1/P2/P3 or PTC1000
Power supply	230V~ ±10% 50÷60Hz 3W
Ambient temperature	-10÷50°C

AH1-5

77 x 35 x 90 mm

Controller for transport refrigeration



Main features

- Refrigeration and heating controller with neutral band
- Selectable NTC10K or PTC input
- Universal 110-230Vac power supply
- FLEXICOLD function for energy saving or alternative setpoint
- Optional control of a second compressor or evaporator
- Excellent evaporator fan control
- Temperature, door open, condenser high temperature/pressure alarms
- Light and standby control (On/Off)
- Connectivity to LAE supervisory systems

Applications

Refrigerated vehicles, plug-in cabinets, refrigerated display cases, control panels.

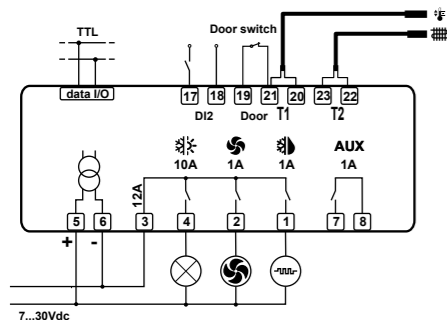
AH1-5 series

Functions		B14L-AG	B14W-AG	C24W-BL
Temperature Inputs	Thermostat	•	•	•
	Evaporator	•	•	•
	Auxiliary			•
Door switch input	Voltage free contact	•	•	•
	Voltage free contact	•	•	
Digital inputs	12÷24Vac voltage			•
	Thermostat	•	•	•
Outputs	Evaporator fans	•	•	•
	Defrost	•	•	•
	Auxiliary	•	•	•
Power supply	115-230Vac		•	•
	7-30Vdc	•		
Serial port	TTL serial port	•	•	
	RS-485 serial port			•
Keypad	Generic	•	•	
	With light button			•

- › All models come with an alarm buzzer.
- › All models are fitted with detachable screw terminals.
- › On request, the AH1-5 is also available with gasket for a better protection between bezel and metal panel.
- › In order to know more options available for the models, please consult LAE or our local dealer.

Technical Data

Control range	-50÷120°C, -55÷240°F
Resolution	0.1 / 1 °C; °F
Accuracy	NTC10K: $\pm 0.3^{\circ}\text{C}$ (-40.0÷70.0°C) PTC1000: $\pm 0.5^{\circ}\text{C}$ (-50÷120°C)
Sensor type	Selectable NTC10K standard mod. SN4B20P1/P2/P3 or PTC1000
Power supply	115-230V~ ±10% 50÷60Hz 3W
Front protection	IP55
Panel cut-out	71 x 29 mm (WxH)
Ambient temperature	-10÷50°C



AH1-5B14L-AG

AR2-5

77 x 35 x 90 mm

Universal Refrigeration Controller with RTC



Main features

- Up to six real time defrosts
- Synchronized defrost start and termination with master-slave connection
- Selectable NTC10K or PTC input
- Universal 110-230Vac power supply
- FLEXICOLD function for energy saving or alternative setpoint
- Optional control of a second compressor or evaporator
- Excellent evaporator fan control
- Temperature, door open, condenser high temperature/pressure alarms
- Light and standby control (On/Off)
- Connectivity to LAE supervisory systems

Applications

Plug-in cabinets, supermarket display cases, cold stores, control panels, upright fridges and freezers, refrigerated tables.

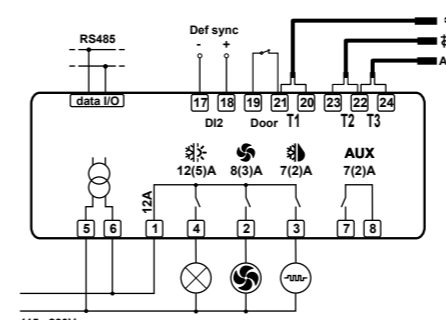
AR2-5 series

Functions		C14D-BG	B24W-BG	C34W-BG
Temperature inputs	Thermostat	•	•	•
	Evaporator	•	•	•
	Auxiliary	•		•
Door switch input	Voltage free contact	•	•	•
	Voltage free contact	•		
Digital inputs	12÷24Vac voltage		•	
	Defrost synchronisation			•
	Thermostat	•	•	•
Outputs	Evaporator fans	•	•	•
	Defrost	•	•	•
	Auxiliary	•	•	•
Power supply	115÷230Vac		•	•
	12Vac/dc	•		
Serial port	TTL serial port			
	RS-485 serial port	•	•	•
Keypad	Generic	•	•	•
	With light button			

- › All models come with an alarm buzzer.
- › All models are fitted with detachable screw terminals.
- › On request, the AR2-5 is also available with gasket for a better protection between bezel and metal panel.
- › In order to know more options available for the models, please consult LAE or our local dealer.

Technical Data

Control Range	-50÷120°C, -55÷240°F
Resolution	0.1 / 1 °C; °F
Accuracy	NTC10K: $\pm 0.3^{\circ}\text{C}$ (-40.0÷70.0°C) PTC1000: $\pm 0.5^{\circ}\text{C}$ (-50÷120°C)
Sensor type	Selectable NTC10K standard mod. SN4B20P1/P2/P3 or PTC1000
Power supply	115÷230V~ ±10% 50÷60Hz 3W
Back-up battery	>150 hours
Front protection	IP55
Panel cut-out	71 x 29 mm (WxH)
Ambient temperature	-10÷50°C



AR2-5C34W-BG

AT1-5

77 x 35 x 77 mm

Refrigeration Controller for HT applications



Main Features

- Selectable Refrigerating or Heating control
- Integrated defrost functions
- Runs on mains power supply
- Direct compressor control through high power 16(4)A or 16(8)A relay
- Selectable NTC10K or PTC probe input
- Auxiliary output configurable in four different operation modes
- Temperature, door open alarms
- Optional light control button
- Connectivity to LAE supervisory systems
- UL approved

Applications

Freestanding upright cabinets and counters, cold stores, plug-in display cases, control panels, heated cabinets.

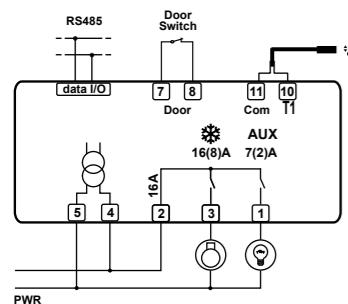
Series AT1-5

Functions		AS5E-G	BS2E-BG	BS6E-AL
Inputs	Thermostat	•	•	•
	Evaporator		•	•
	Door switch		•	•
Outputs	Thermostat 16(4)A		•	
	Thermostat 16(8)A	•		•
	Auxiliary 7(2)A		•	•
Power supply	230Vac	•	•	•
	TTL			•
Serial port	RS-485		•	
	Generic	•	•	
Kaypad	Generic	•	•	
	With light button			•

- › Models with removable screw terminal blocks are available. In this case, the letter "S" of code changes in "Q", ex. AT1-5BQ2E-BG.
- › All models come with an alarm buzzer.
- › Versions with 110V power supply are available.
- › On request, the AT1-5 is also available with gasket for a better protection between bezel and metal panel.
- › In order to know more options available for the models, please consult LAE or our local dealer.

Technical Data

Control range	-50÷120°C
Resolution	0.1 / 1 °C; °F
Accuracy	NTC10K: $\pm 0.3^{\circ}\text{C}$ (-40.0÷70.0°C) PTC1000: $\pm 0.5^{\circ}\text{C}$ (-50÷120°C)
Sensor type	selectable NTC10K standard mod. SN4B20P1/P2 or PTC1000
Power supply	230V~ ±10% 50÷60Hz 3W
Front protection	IP55
Panel cut-out	71 x 29 mm (WxH)
Ambient temperature	-10÷50°C



AT1-5AS6E-BG

AT2-5

77 x 35 x 77 mm

Refrigeration Controller for HT/LT



Main Features

- Selectable Refrigerating or Heating control
- Runs on mains power supply
- Direct compressor control through high power 16(5)A
- Auxiliary output configurable in six different operating modes
- Selectable NTC10K or PTC input
- Electrical, off cycle or hot gas defrost
- Temperature, door open alarms
- Optional light control button
- Connectivity to LAE supervisory systems
- UL approved

Applications

High or Low Temperature upright cabinets and counters, cold stores, plug-in display cases, control panels, heated cabinets.

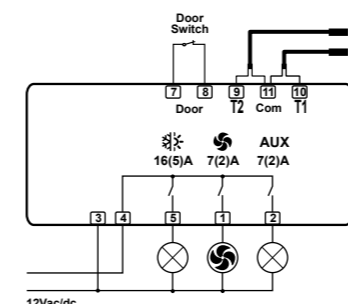
Series AT2-5

Functions		BS4E-G	BS4E-AL	BS4E-BG
Inputs	Thermostat	•	•	•
	Evaporator	•	•	•
	Door switch	•	•	•
Outputs	Thermostat	•	•	•
	Evaporator fans	•	•	•
	Auxiliary	•	•	•
Power supply	230Vac	•	•	•
	Serial port TTL		•	
Serial port	Serial port RS-485			•
	Generic	•		•
Kaypad	Generic	•		•
	With light button		•	

- › Models with removable screw terminal blocks are available. In this case, the letter "S" of code changes in "Q", ex. AT2-5BQ4E-AL.
- › All models come with an alarm buzzer.
- › Versions with 110V power supply are available.
- › On request, the AT2-5 is also available with gasket for a better protection between bezel and metal panel.
- › In order to know more options available for the models, please consult LAE or our local dealer.

Technical Data

Control Range	-50÷120°C
Resolution	0.1 / 1 °C; °F
Accuracy	NTC10K: $\pm 0.3^{\circ}\text{C}$ (-40.0÷70.0°C) PTC1000: $\pm 0.5^{\circ}\text{C}$ (-50÷120°C)
Sensor type	Selectable NTC10K standard mod. SN4B20P1/P2 or PTC1000
Power supply	230V~ ±10% 50÷60Hz 3W
Front protection	IP55
Panel cut-out	71 x 29 mm (WxH)
Ambient temperature	-10÷50°C



AT2-5BS4E-G

BD1-28

107 x 95 x 47 mm

Split Comprehensive Refrigeration Controller



Main features

- Refrigeration controller with cyclic defrosts
- Enhanced ECO Energy Saving management
- Optional compressor variable speed control
- Suitable for R290
- Up to 2 auxiliary configurable outputs (Light, switched loads, second evaporator etc.)
- Universal mains power supply
- Connectivity to hard-wired supervisory systems
- Many display options: coloured LED's with DU5S, capacitive touch TU5S or high contrast LCD, fully customised

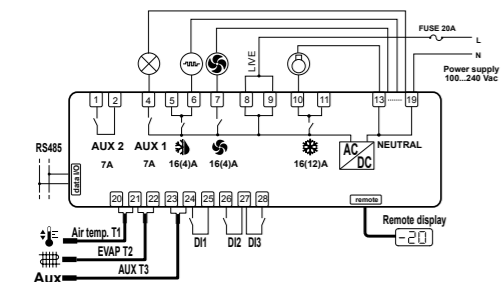
Applications

Upright refrigerators, plug-in and supermarket display cases, cold stores, control panels.

BD1-28 series

Functions		B0Q3W-A	C1S4WH-B	C1S5W-B
Temperature inputs	Thermostat	•	•	•
	Evaporator	•	•	•
	Auxiliary		•	•
DI1, DI2 digital inputs	Voltage free contact	•	•	•
	Voltage free contact/defrost synchronization		•	•
DI3 aux. digital input	Thermostat	•	•	•
	Evaporator fans	•	•	•
	Defrost	•	•	•
	Auxiliary 1		•	•
	Auxiliary 2			•
Connections	Quick with M/F connectors	•		
	Screw terminals		•	•
Power supply	100÷240Vac	•	•	•
R290 option			•	
Aux functions	TTL serial port	•		
	RS485 serial port		•	•

› All models come with an alarm buzzer.
› In order to know more options available, please consult LAE or our local dealer.



Technical Data

Range	-50÷110°C, -58÷180°F
Resolution	0.1 / 1 °C; °F
Precision	<±0.5°C within the measurement range
Sensor type	Mod. standard SN4B20P1/P2/P3
Power supply	100÷240Vac ±10% 50÷60Hz 3W
Ambient temperature	-10÷50°C

BD1-28C1S5W-B

BR1-28

107 x 95 x 47 mm

Clever Split Refrigeration Controller with RTC



Main features

- Up to six real time defrosts per day
- Enhanced ECO Energy Saving management
- Optional compressor variable speed control
- Suitable for R290
- Up to 2 auxiliary configurable outputs (Light, switched loads, second evaporator etc.)
- Universal mains power supply
- Connectivity to hard-wired supervisory systems
- Many display options: coloured LED's with DU5S, capacitive touch TU5S or high contrast LCD, fully customised
- UL approved

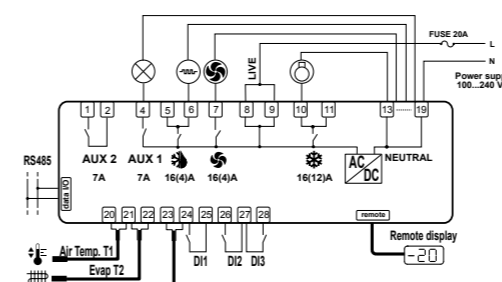
Applications

Upright refrigerators, plug-in and supermarket display cases, cold stores, control panels.

BR1-28 series

Functions		B0Q3W-A	C1S4WH-B	C1S5W-B
Temperature inputs	Thermostat	•	•	•
	Evaporator	•	•	•
	Auxiliary		•	•
DI1, DI2 digital inputs	Voltage free contact	•	•	•
	Voltage free contact/defrost synchronization		•	•
DI3 aux. digital input	Thermostat	•	•	•
	Evaporator fans	•	•	•
	Defrost	•	•	•
	Auxiliary 1		•	•
	Auxiliary 2			•
Connections	Quick with M/F connectors	•		
	Screw terminals		•	•
Power supply	100÷240Vac	•	•	•
R290 option			•	
Aux functions	TTL serial port	•		
	RS485 serial port		•	•

› All models come with an alarm buzzer.
› In order to know more options available, please consult LAE or our local dealer.



Technical Data

Range	-50÷110°C, -58÷180°F
Resolution	0.1 / 1 °C; °F
Precision	<±0.5°C within the measurement range
Sensor type	NTC10, standard mod. SN4B20P1/P2/P3
Power supply	100÷240Vac ±10% 50÷60Hz 3W
Ambient temperature	-10÷50°C

BR1-28C1S5W-B

BR1-27

71 x 97 x 61 mm DIN rail

Clever Split Refrigeration Controller with RTC



Main features

- Up to six real time defrosts per day
- Enhanced ECO Energy Saving management
- Defrost synchronisation between two or more controllers
- Up to 2 auxiliary configurable outputs (Light, switched loads, second evaporator etc.)
- Universal mains power supply
- Connectivity to hard-wired supervisory systems, or wireless option

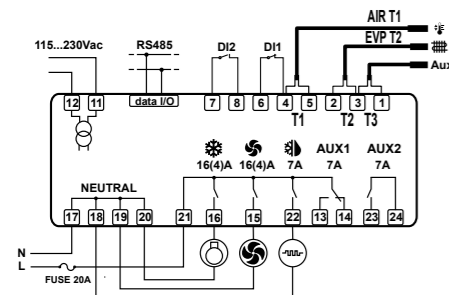
Applications

Cold stores, control panels.

BR1-27 series

Functions		C1S5W-B
Temperature inputs	Thermostat	•
	Evaporator	•
	Auxiliary	•
DI1, DI2 digital inputs	Voltage free contact / Defrost synchronisation	•
Outputs	Thermostat	•
	Evaporator fans	•
	Defrost	•
	Auxiliary 1	•
	Auxiliary 2	•
Connections	Screw terminals	•
Power supply	100÷240Vac	•
Aux. functions	RS485 serial port	•

- › All models come with an alarm buzzer.
- › In order to know more options available, please consult LAE or our local dealer.



BR1-27C1S5W-B

BIT25

86 x 82 x 44 mm

Split HT/LT Refrigeration Controller



Main features

- Three highly rated relay outputs
- Configurable control of Aux 1 and Aux 2 outputs
- Alternate set of parameters for energy saving
- Management of multiple alarms
- Option of setpoint adjustment via a potentiometer, no display
- Standby button (On/Off)
- Universal power supply 100-240V
- Suitable for R290
- Connection to LAE supervisory systems
- UL approved

Applications

Upright refrigerators, bottle coolers, plug-in display cases for shops and supermarkets, cold stores, control panels.

BIT25 series

Functions		BS1E-A	B1S2E-A	B1S3WH-B
Temperature inputs	Thermostat	•	•	•
	Evaporator	•	•	•
Digital inputs	DI1 digital input	•	•	•
	DI2 digital input	•	•	•
Outputs	Thermostat	•	•	•
	Auxiliary 1		•	•
	Auxiliary 2			•
R290 option				•
Power supply	230Vac	•	•	
	115Vac			
	100÷240Vac			•
Serial port	TTL	•	•	
	RS-485			•

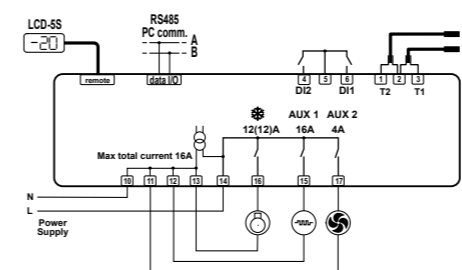
- › All models come with an alarm buzzer and DI1 digital input.
- › In order to know more about versions available for the models, please consult LAE or our local dealer.

Technical Data

Range	-50...110°C, -58...180°F
Resolution	0.1 / 1 °C; °F
Precision	<±0.5°C within the measurement range
Sensor type	NTC10K mod. standard SN4B20P1/P2
Power supply	115Vac, 230Vac or universal 100..240Vac ±10% 50÷60Hz 3W
Ambient temperature	-10÷50°C

LCD-5S display unit

Dimensions	77 x 35 x 20 mm (WxHxD)
Panel cut-out	71 x 29 mm (WxH)
Front protection	IP55



BIT25B1S3W-B

DISPLAYS

Displays for BD / BR1-28



DU5S Red, Blue or Amber LED display unit	
Dimensions	77 x 35 x 20 mm (W x H x D)
Panel cut-out	71 x 29 mm (W x H)
Front protection	IP55
Ambient temperature	-10÷50°C



TU5S Blue LED capacitive touch display unit	
Dimensions	77 x 35 x 13 mm (W x H x D)
Panel cut-out	71 x 29 mm (W x H)
Panel thickness	0.9 to 1.2 mm
Front protection	IP55
Ambient temperature	-10÷50°C



DU00 High contrast LCD display	
Dimensions	78 x 64 x 15 mm (W x H x D)
Panel cut-out	57 x 60 mm (W x H)
Front protection with external overlay	IP67
Ambient temperature	-10÷50°C

Model	Features
DU5S	Red LEDs
DU5S-AMB	Amber LEDs
DU5S-BLU	Blue LEDs
DU00-02	With buzzer
DU00-03	Without buzzer
TU5S-BLU	Blue LEDs

› In order to know MOQ per model and options available, please consult LAE or our local dealer.

LCD32

196 x 38 x 78 mm

Compact multi-function refrigeration controller

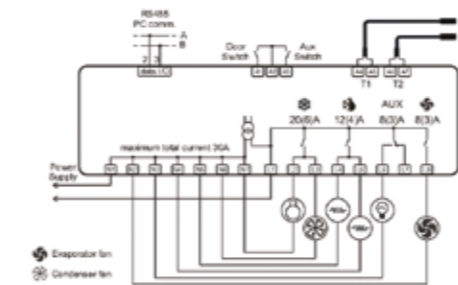


Main features

- Panel thermostat for High and Low Temperature
- Runs on mains power supply
- Evaporator fan control
- Electrical, hot gas or off cycle defrost
- Light or auxiliary load control
- Quick connectors for Lives and Neutrals
- Two operating parameter sets
- Door open, high/low temperature, HP alarms
- Automatic condenser clean warning
- Connection to LAE supervisory systems

Applications

Cold stores, refrigerating cabinets, tables and counters, saladettes, medical cabinets and display cases, both static and ventilated.



LCD32Q4E-C

LCD32 series

Functions		Q4E-C	S4E-C
Connections		Quick	Screw terminals
Inputs	Thermostat	•	•
	Evaporator	•	•
Outputs	Thermostat	•	•
	Defrost	•	•
	Evaporator fans	•	•
Options	Auxiliary	•	•
	Door switch + aux.	•	•
	TTL serial port		
Power supply	RS485 serial port	•	•
	230Vac	•	•

› On request the LCD32 is also available with gasket for a better protection between bezel and metal panel. In this case, the code changes in, for ex. LCD32Q4E-CS. Please ask information about standard versions available with this option.

› In order to know versions available, please consult LAE or our local dealer.

Technical Data

Programming Range	-30.0÷30.0°C
Resolution	0.1 / 1; °C / °F
Accuracy	<±0.2°C (-30.0÷30.0°C)
Sensor type	NTC, standard mod. SN2B20P1/P2
Power supply	230Vac ±10%; 50/60Hz; 3W
Front protection	IP55
Panel cut-out	163 x 31.5 mm
Ambient temperature	-10÷50°C

MS-27

71 x 97 x 61 mm DIN Rail

Multi-compressor or multi-fan controller



Main features

- Four ON/OFF outputs for the control of single or multi-stage compressors or fans.
- Proportional output for speed control (inverters).
- Output with change-over contacts for alarm control.
- Input for pressure transmitter (0/4...20mA) or for a temperature probe (NTC10K).
- Two digital inputs on voltage free contact for programmable function, up to three digital optocoupled voltage inputs for a complete system diagnostics.
- Selection of the control algorithm: rotation of outputs, sequential activation, optimisation of the available power.
- Pressure – Temperature conversion according to gas used.
- Storage of the latest nine alarms.
- Automatic maintenance management.
- Connectivity to LAE supervisory systems.

Applications

For cryogenerators in supermarkets, cold stores and all cryogenic systems with variable demand.

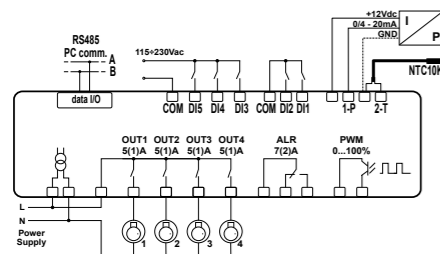
MS-27 series

Functions		-1SE-A	-1SU-B
Connections	Screw terminals	•	•
Power supply	230Vac	•	
	115Vac		•
Serial port	TTL	•	
	RS485		•

› In order to know more options available for the models, please consult LAE or our local dealer.

Technical data

Pressure input	type	0/4...20mA (LAE PGT35)
	range	-1.0...45.0bar
	resolution	0.1bar
	accuracy	±0.2bar
Temperature input	type	NTC10K (LAE SN4...)
	range	-50.0...120.0°C
	accuracy	±0.5°C
Power supply	MS27...E	230Vac±10%, 50/60Hz, 3W
	MS27...U	115Vac±10%, 50/60Hz, 3W
Relay outputs	OUT1...OUT4	5(1)A
	Alarm	7(2)A
Front protection		IP55
Ambient temperature		-10÷50°C



MS27-1SE-B

TMR15

77 x 35 x 77 mm

Countdown timer



Main features

- Panel moun timer
- Countdown in hours and minutes or minutes and seconds
- Manual start/stop of countdown
- Remote start of countdown
- Manual switching on/off of output
- Mains powered
- Buzzer to warn countdown end
- Keypad lock

Applications

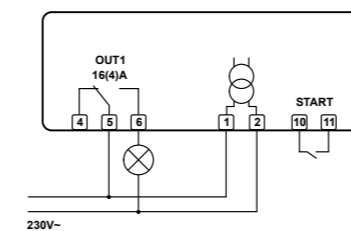
Control of duration of industrial processes, control of dough retarders, control of cooking time in ovens.

TMR15 series

Standard versions	Power supply	Buzzer
TMR15E	230Vac ±10%, 3W	
TMR15E-A	230Vac ±10%, 3W	•
TMR15D-A	12Vac/dc ±10%, 3W	•

Technical Data

Outputs	Out 16(4)A 240V-
Power supply	230Vac ±10% 3W
Front protection	IP55
Panel cut-out	71 x 29 mm (WxH)
Ambient temperature	-10÷50°C



TMR15E-A

DL28

Flexible data logger



DL28

Main features

- Recording of temperatures and states such as defrosts, alarms etc.
- It may work both as a stand alone with own probe and as a unit collecting data from LAE controllers connected to it.
- Recorded data may be downloaded through PC, USB, Bluetooth®
- Universal mains power supply
- Optional power supply for refrigerated transports
- Continuity of operation in case of power failure through internal or external backup battery
- Relay output for remote alarm
- Free PC software for data logger configuration and display of recordings on graph or Excel tables

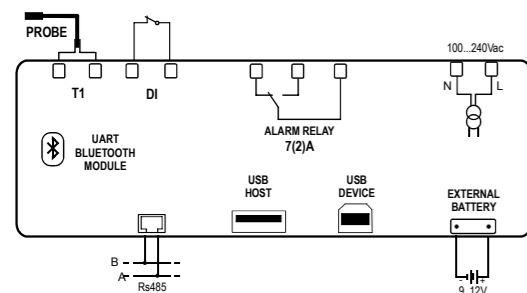
Applications

HACCP, plant diagnostics, alarm event recording.

Technical data

Temperature input	Type	NTC10KΩ@25°C
	Range	-50... 110°C
	Accuracy	<0.5°C
Output	Max load	5(1)A; 240Vac
Max No. of devices connected		4 devices through RS485
Internal Mass Memory		4MByte
Bluetooth	Specification compliant	V2.1 - V3.0
	Range	class-2
USB	Connection type	A2.0; B2.0
Internal backup battery		>20 day, self-rechargeable
External battery	Voltage	7...12V
	Consumption	75mAh
	Connector	XAP-02V-1 (JST)
Power supply		100...240 Vac, 50/60 Hz, 3W
Operating conditions		-10... +50°C; 15% ... 80% r.H.

› In order to know the options available for the models, please consult LAE or our local dealer.



PPC-10A

Panel PC for HACCP functions



PPC-10A

Main features

- Panel PC with Tab5 software for HACCP functions
- Compact touchscreen system for data monitoring, recording, alarm event management and remote access

Applications

Restaurants, supermarkets, service stations.

Functions

System	Processor	Intel® Atom N2600 Dual Core 1.6GHz
	System Chipset	Intel® NM10 Chipset
	System Memory	2GB SODIMM DDR3-800
	Storage	32GB mSATA SSD
Display	Size/Type	10.1" 1024x600 capacitive multi-touch screen
	Brightness	200cd/m² typ.
	Contrast	500:1 typ.
	Viewing angle	Horizontal: -70...70; Vertical: -50...60
Input / Output	Serial ports	1 x RS-232/422/485; 1 x RS-232
	USB ports	2 x USB 2.0
	Ethernet	2 x RJ45 10/100/1000 Mbps
Mechanical	Dimensions	263.3 (W) x 171.0 (H) x 35.7 (D) mm
	Mounting	Panel or VESA 75 x 75 mm
	Cooling system	Fanless
Environment	Op. Temperature	0 to 50 °C
	Op. Humidity	30 to 90% (non condensing)
Software	Op. System	Windows Embedded Standard 7 / OpenSUSE Linux

TAB 5.0

Monitoring, Logging and Programming Software



Main Features

- Overall plant monitoring
- Storage of temperature, humidity, pressure, alarms
- Display and printing in numerical and graphic form of stored data
- Export of stored data for Excel* or other spread sheets
- Diagnostics with dynamic graphs of all analog and digital inputs
- Virtual instrument for analysing the system and setting regulator parameters
- Direct sending of emails and SMS relating to the alarm state
- Connection to remote PC for tele-servicing via Internet
- Languages available: English, German, Italian, Polish.

Available options

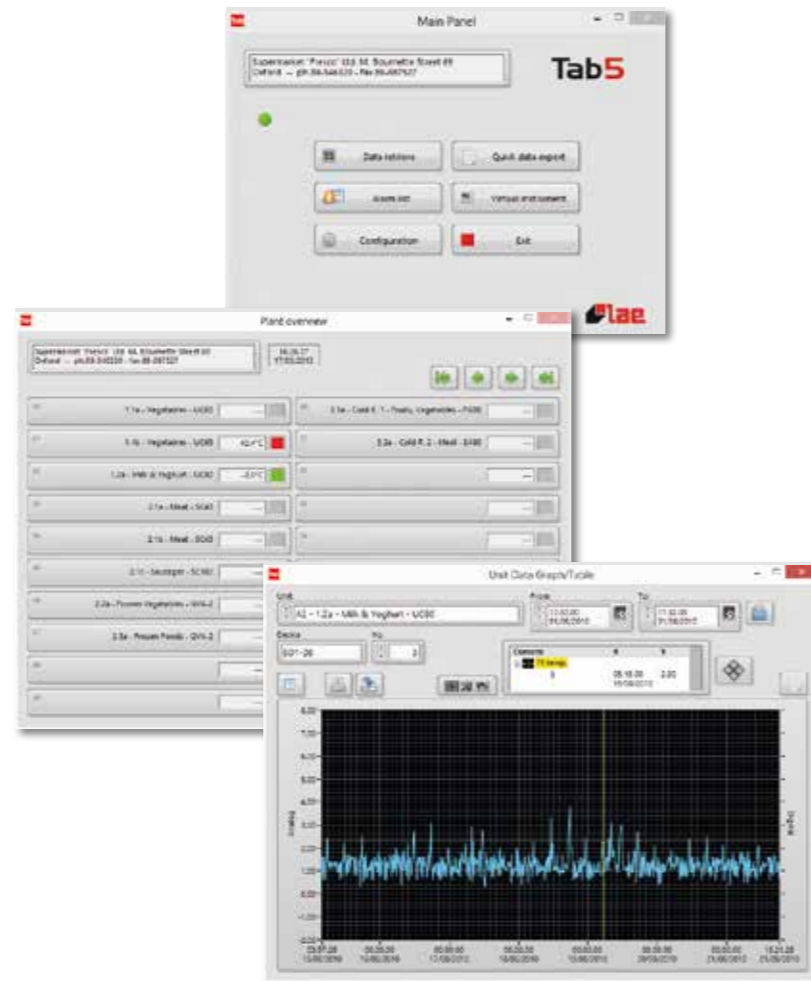
Available as full optional as described above but also in a "low cost version" for data logging only. This version is called TAB LV

Applications

Supervision of the refrigeration process in supermarkets, convenience stores, shops, petrol stations, large kitchens, food factories, cruise ships etc.

System Requirements

- › Computer with Windows 7/8/10 operating system installed and properly running, minimum processor and memory as required from Windows version – USB port – Mouse
- › 1024x768 pixel screen resolution
- › 10GB available on Hard Disk
- › RS232 serial port (COM) required if a GSM modem is fitted
- › USB to RS-485 converter mod. USB485-STIXL. Up to 200 controllers connectable. Every 62 controllers, you must add a repeater ATC-109N



HT2WAD

Humidity transmitters



Technical data	
Sensor type	capacitive
Output signal	0÷1Vdc
Range	0%÷100% r.H.
Accuracy	±5% r.H. (25%÷75% r.H.)
Sheath	Ø14 x 40 mm
Protection	IP65 (electronics)
Operating temperature	0÷75°C (sensor) / 0÷50°C (electronics)
Dimensions of the enclosure	110 x 53 x 75 mm (electronics)
Power supply	12Vdc, 0.2W

PGT35

Pressure Transmitter



Technical data	
Sensor type	Piezoresistive gauge
Output	4÷20mA
Range	-0.5÷35.0 bar
Accuracy	max±1%FS (0÷50°C)
Sheath	Ø 17 x 58 mm
Connections	mPm connector
Pressure port	7/16"-20UNF male, steel AISI 316L
Protection	IP65
Ambient temperature	-40÷100°C
Power supply	8÷32Vdc

NTC2K & NTC10K

Temperature probes

SN2BxxPx		Standard Versions	
Sensor type	NTC2K, 2000Ω @ 25°C	SN2B15P1, P2	1.5 m
Range	-40÷120°C	SN2B20P1, P2	2 m
Accuracy	±0.3°C @ 25°C	SN2B25P1, P2	2.5 m
Sheath	∅ 6 x 29 mm; TPE	SN2B30P1, P2, P3	3 m
Cable	2 wires x 0.35 mm ² ; -40÷120°C; TPE; loose leads	SN2B50P1	5 m
Protection	IP67		



SN2B / SN4BxxP1, P2

SN4BxxPx		Standard Versions	
Sensor type	NTC10K, 10000Ω @ 25°C	SN4B10P1	1 m
Range	-40÷120°C	SN4B15P1, P2	1.5 m
Accuracy	±0.3°C @ 25°C	SN4B20P1, P2	2 m
Sheath	∅ 6 x 29 mm; TPE	SN4B25P1, P2	2.5 m
Cable	2 wires x 0.35 mm ² ; -40÷120°C; TPE; loose leads	SN4B30P1, P2	3 m
Protection	IP67	SN435P1, P2	3.5 m
		SN4B40P1	4 m
		SN4B50P1, P2	5 m
		SN4B70P1	7 m



SN4BxxP3-Y

SN4BxxPx		Standard Versions	
Sensor type	NTC10K, 10000Ω @ 25°C	SN4B10P1	1 m
Range	-40÷120°C	SN4B15P1, P2	1.5 m
Accuracy	±0.3°C @ 25°C	SN4B20P1, P2	2 m
Sheath	∅ 6 x 29 mm; TPE	SN4B25P1, P2	2.5 m
Cable	2 wires x 0.35 mm ² ; -40÷120°C; TPE; loose leads	SN4B30P1, P2	3 m
Protection	IP67	SN435P1, P2	3.5 m
		SN4B40P1	4 m
		SN4B50P1, P2	5 m
		SN4B70P1	7 m

SN4BxxP4-S

SN4BxxPx		Standard Versions	
Sensor type	NTC10K, 10000Ω @ 25°C	SN4B10P1	1 m
Range	-40÷120°C	SN4B15P1, P2	1.5 m
Accuracy	±0.3°C @ 25°C	SN4B20P1, P2	2 m
Sheath	∅ 6 x 29 mm; TPE	SN4B25P1, P2	2.5 m
Cable	2 wires x 0.35 mm ² ; -40÷120°C; TPE; loose leads	SN4B30P1, P2	3 m
Protection	IP67	SN435P1, P2	3.5 m
		SN4B40P1	4 m
		SN4B50P1, P2	5 m
		SN4B70P1	7 m

SN4BxxP4-S

SN4BxxPx		Standard Versions	
Sensor type	NTC10K, 10000Ω @ 25°C	SN4B10P1	1 m
Range	-40÷120°C	SN4B15P1, P2	1.5 m
Accuracy	±0.3°C @ 25°C	SN4B20P1, P2	2 m
Sheath	∅ 6 x 29 mm; TPE	SN4B25P1, P2	2.5 m
Cable	2 wires x 0.35 mm ² ; -40÷120°C; TPE; loose leads	SN4B30P1, P2	3 m
Protection	IP67	SN435P1, P2	3.5 m
		SN4B40P1	4 m
		SN4B50P1, P2	5 m
		SN4B70P1	7 m

SN4BxxP4-S

SN4BxxPx		Standard Versions	
Sensor type	NTC10K, 10000Ω @ 25°C	SN4B10P1	1 m
Range	-40÷120°C	SN4B15P1, P2	1.5 m
Accuracy	±0.3°C @ 25°C	SN4B20P1, P2	2 m
Sheath	∅ 6 x 29 mm; TPE	SN4B25P1, P2	2.5 m
Cable	2 wires x 0.35 mm ² ; -40÷120°C; TPE; loose leads	SN4B30P1, P2	3 m
Protection	IP67	SN435P1, P2	3.5 m
		SN4B40P1	4 m
		SN4B50P1, P2	5 m
		SN4B70P1	7 m

SN4BxxP4-S

SN4BxxPx		Standard Versions	
Sensor type	NTC10K, 10000Ω @ 25°C	SN4B10P1	1 m
Range	-40÷120°C	SN4B15P1, P2	1.5 m
Accuracy	±0.3°C @ 25°C	SN4B20P1, P2	2 m
Sheath	∅ 6 x 29 mm; TPE	SN4B25P1, P2	2.5 m
Cable	2 wires x 0.35 mm ² ; -40÷120°C; TPE; loose leads	SN4B30P1, P2	3 m
Protection	IP67	SN435P1, P2	3.5 m
		SN4B40P1	4 m
		SN4B50P1, P2	5 m
		SN4B70P1	7 m

SN4BxxP4-S

SN4BxxPx		Standard Versions	
Sensor type	NTC10K, 10000Ω @ 25°C	SN4B10P1	1 m
Range	-40÷120°C	SN4B15P1, P2	1.5 m
Accuracy	±0.3°C @ 25°C	SN4B20P1, P2	2 m
Sheath	∅ 6 x 29 mm; TPE	SN4B25P1, P2	2.5 m
Cable	2 wires x 0.35 mm ² ; -40÷120°C; TPE; loose leads	SN4B30P1, P2	3 m
Protection	IP67	SN435P1, P2	3.5 m
		SN4B40P1	4 m
		SN4B50P1, P2	5 m
		SN4B70P1	7 m

SN4BxxP4-S

PTC1000

Temperature probes

QT1KxxP1/P2		Standard versions	
Sensor type	KTY82-121, 1000 Ohm @ 25°C	QT1K20P1, P2	2 m
Range	-40÷120°C	QT1K30P1, P2	3 m
Precision	±1.5°C @ 25°C	QT1K35P1	3.5 m
Tube	∅ 6 x 20 mm; AISI 304 steel	QT1K40P1	4 m
Cable	2 wires x 0.25 mm ² ; thermoplastic rubber flat cable 1.65mm x 3.60mm; loose leads	QT1K50P1, P2	5 m
Protection	IP67		

QT1KxxP-X		Standard versions	
Sensor type	KTY82-121, 1000 Ohm @ 25°C	QT1K20P-X	2 m
Range	-40÷120°C	QT1K30P-X	3 m
Accuracy	±1.5°C @ 25°C	QT1K50P-X	5 m
Tube	∅ 6 x 40 mm; AISI 304 steel		
Cable	2 wires x 0.25 mm ² ; thermoplastic rubber flat cable 1.65mm x 3.60mm; loose leads		
Protection	IP67		

MOQ: 10 pieces

QT1KxxC 1/C2/C3		Standard versions	
Sensor type	KTY82-121, 1000 Ohm @ 25°C	QT1K15C1, C2	1.5 m
Range	-40÷120°C	QT1K20C1, C2, C3	2 m
Precision	±1.5°C @ 25°C	QT1K25C1, C2	2.5 m
Tube	∅ 6 x 20 mm; AISI 304 steel	QT1K30C1	3 m
Cable	2 wires x 0.25 mm ² ; thermoplastic rubber flat cable 1.65mm x 3.60mm; connectors	QT1K35C1, C2	3.5 m
Protection	IP67	QT1K50C1	5 m
		QT1K60C1	6 m

QT1LxxP-X		Standard versions	
Sensor type	KTY82-121, 1000 Ohm @ 25°C	QT1L20P-X	2 m
Range	-40÷110°C		
Precision	±1.5°C @ 25°C		
Tube	∅ 6 x 20 mm; AISI 304 steel		
Cable	2 wires x 0.25mm ² ; double insulated, thermoplastic rubber cable ∅3.3mm; loose leads		
Protection	IP67		

MOQ: 10 pieces

QT1NxxP-/01		Standard versions	
Sensor type	KTY82-121, 1000 Ohm @ 25°C	QT1N20P-/01	2 m
Range	-40÷110°C	QT1N30P-/01	3 m
Precision	±1.5°C @ 25°C		
Tube	∅ 6 x 40 mm; AISI 304 steel		
Cable	2 wires x 0.25mm ² ; screened silicon cable ∅ 4.6mm; loose leads		
Protection	IP67		

MOQ: 10 pieces

Pt100 & thermocouples

Temperature probes

QP1NxxP-X	
Sensor Type	Pt100 class B
Range	-40÷110°C
Precision	±0.3°C @ 0°C
Tube	Ø 6 x 40 mm; AISI 304 steel
Cable	3 wires x 0.25mm ² ; thermoplastic rubber cable Ø 3.4 mm; loose leads
Protection	IP67

Standard versions	
QP1N20P-X	2 m
MOQ: 10 pieces	

SPT0	
Sensor Type	Pt100 class "B" (DIN43760), 100Ω @ 0°C
Range	0÷400°C
Precision	±0.3°C or ±0.5°C (in the worst case scenario)
Response time	10 seconds in water
Sheath	Ø 6 x 160 mm; stainless steel AISI316
Cable	3 wires x 0.24 mm ² ; L = 100 cm, fiber glass, loose leads
Protection	IP65



TJ.ECO	
Sensor Type	J thermocouple
Range	0÷450°C
Precision	±2.5°C or ±0.75% (in the worst case scenario)
Response time	10 seconds in water
Sheath	Ø 6 x 160 mm; stainless steel AISI316
Cable	2 wires x 0.50 mm ² ; L = 300 cm, fiber glass, loose leads
Protection	IP65



TK.ECO	
Sensor Type	K thermocouple
Range	0÷600°C
Precision	±2.5°C or ±0.75% (in the worst case scenario)
Response time	approx. 2 seconds in water
Sheath	Ø 4.5 x 160 mm; INCONEL600
Cable	2 wires x 0.24 mm ² ; L = 300 cm, fiber glass, loose leads
Protection	IP65



www.lae-electronic.com

LAE ELECTRONIC

Via Padova, 25 - 31046 Oderzo (Treviso) ITALY

Tel. +39 0422.815320 Fax +39 0422.814073