

Teleservicing software

Main Features

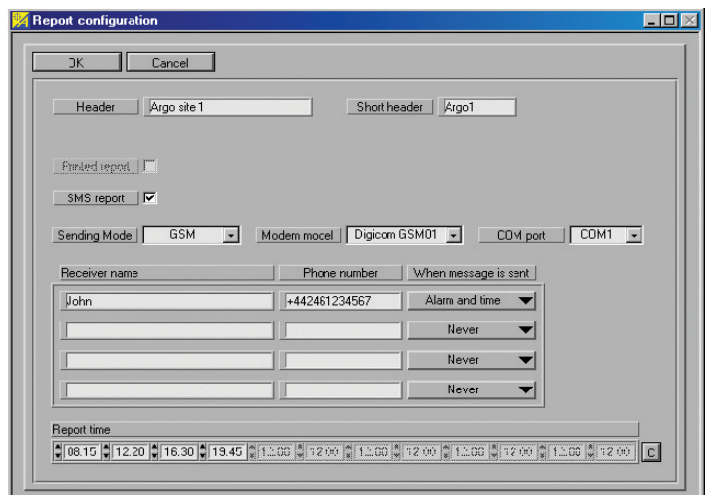
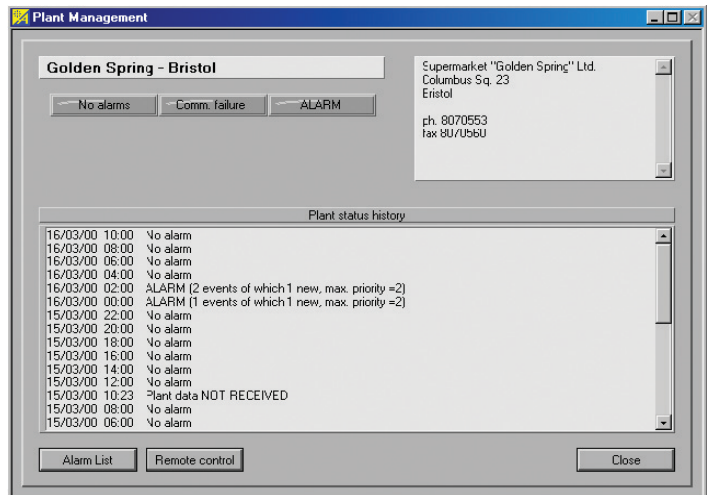
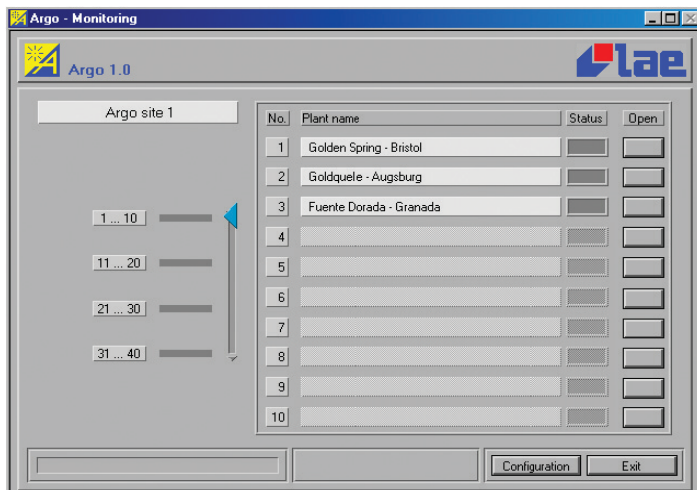
- Possibility of supervising up to 40 systems controlled by TAB software
- Continuous monitoring of system status
- Storage of alarms and transmission of SMS to one or more mobile phones
- Remote control of TABs for diagnostics and programming
- Allows fast service with suitable spares.

Minimum hardware requirements

- Computer with Windows 95/98 operating system installed and properly running, minimum processor and memory as required from Windows* version - Parallel port - Mouse - CD-ROM drive
- 1024x768 pixel screen resolution, 16-bit colour
- 100MB Hard Disk space for software installation
- modem suitable for ISDN/PSTN or other interface with the line used
- pcAnywhere* software, "base" version
- RS232 serial port (COM) if a GSM modem is fitted
- GSM modem for sending SMS

On each TAB station you must add:

- ISDN/PSTN modem or other interface with the line used
- pcAnywhere* software, "host" version



If you need details on these components, please consult our local dealer.